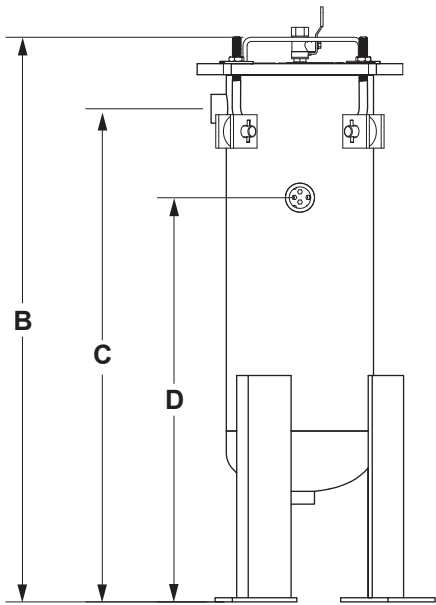


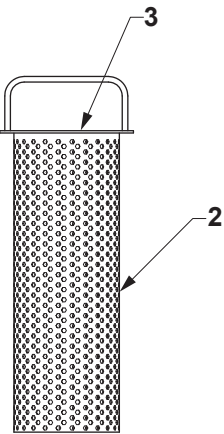
# J.L. WINGERT CO.

## Specification Sheet RECOVERY TANK MODEL RT-[ ]

SS052255.B 03/17



RT-2 and RT-5



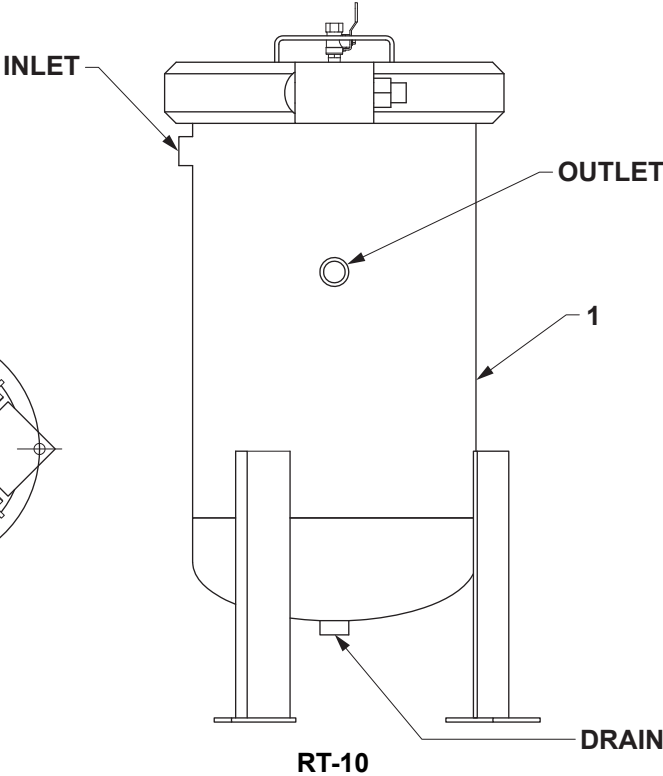
**SPECIFICATIONS**

KEY	DESCRIPTION
1	<b>TANK:</b> Fabricated carbon steel tank, lid, Buna-N o-ring and brass air release. Interior is epoxy coated; exterior is coated with water based enamel paint.
2	<b>BASKET:</b> 316 Stainless Steel perforated basket, flange and handle.
3	<b>FILTER:</b> Napped polyester 25 micron filter bag.

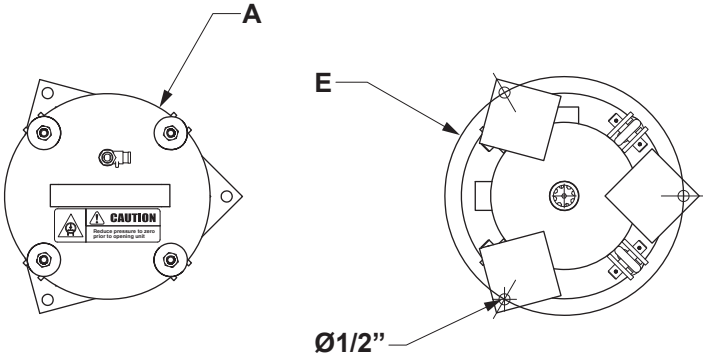
**REPLACEMENT FILTER BAGS**

RECOVERY TANK	REPLACEMENT FILTER BAG
RT-2	<b>RFB-2:</b> 25 micron filter bag for RT-2
RT-5	<b>RFB-5:</b> 25 micron filter bag for RT-5
RT-10	<b>RFB-10:</b> 25 micron filter bag for RT-10

**NOTE:** Other micron ratings are available.



RT-10



**DIMENSIONS**

MODEL	CAPACITY (GALS /LTRS)	FILTER VOLUME	INLET	OUTLET	DRAIN	A	B	C	D	E	WEIGHT
RT-2	2 / 7.57	239 in <sup>3</sup>	3/4" FNPT	3/4" FNPT	3/4" FNPT	9 1/4"	25 7/16"	18 3/16"	22 3/16"	10 3/4"	58 lbs.
RT-5	5 / 18.92	766 in <sup>3</sup>	3/4" FNPT	3/4" FNPT	3/4" FNPT	13 3/4"	26 7/16"	19 3/16"	23 3/16"	15 1/16"	115 lbs.
RT-10	10 / 37.85	1,178 in <sup>3</sup>	3/4" FNPT	3/4" FNPT	3/4" FNPT	15 1/4"	30 7/8"	25 11/19"	20 1/4"	17 1/8"	195 lbs.

**Note:** All dimensions are +/- 1/8". All weights are approximate. All dimensions are subject to change without notice.